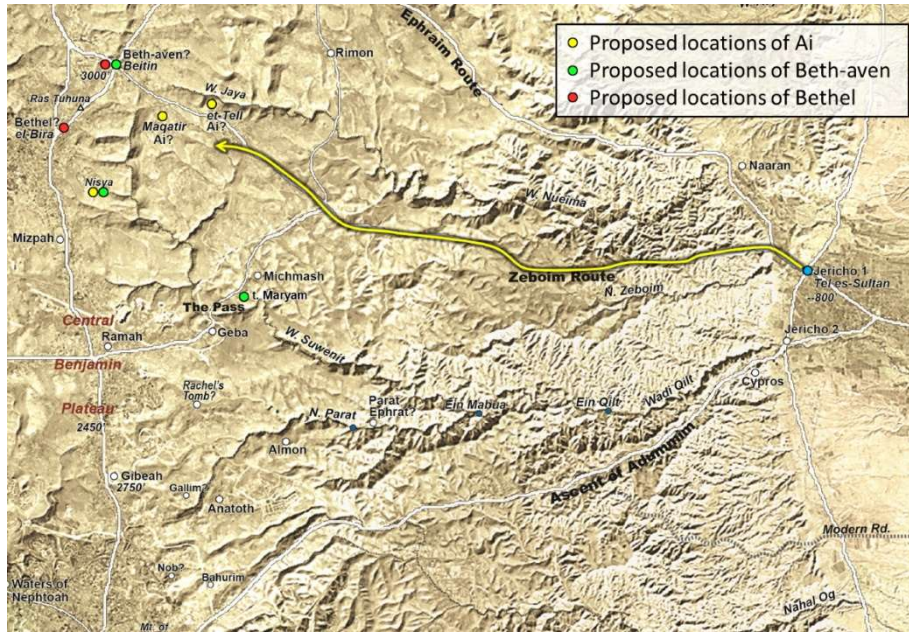


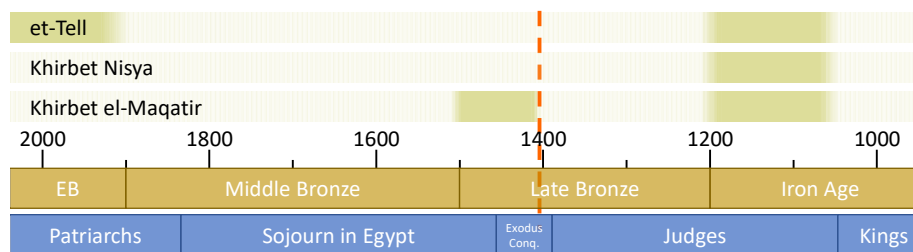
Joshua 7:1-9 Defeat at Ai

Ai (pronounced “eye”) was located up in the hill country, west of Jericho. The distance from Jericho, following the Zebouim ridge route, was about 12.5 miles. Ai is about 3,600 ft higher in elevation than Jericho (+2900 vs. -700). The location of Ai has been debated. Three sites have been suggested for Ai, three for Beth-aven, and two for Bethel (Josh 7:2).



▲ Satellite map showing proposed locations of Ai, Beth-aven, and Bethel. Map 1-9 from the *Satellite Bible Atlas* by William Schlegel.

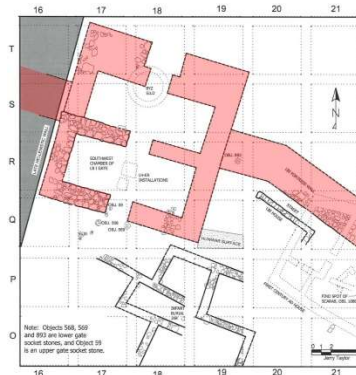
The most likely locations are: Ai = Khirbet el-Maqtir; Bethel = el-Bireh; Beth-aven = Beitin.



▲ Timeline showing the periods during which et-Tell, Khirbet Nisya, and Khirbet el-Maqtir were inhabited. Only Khirbet el-Maqtir has produced evidence of being a walled settlement during the Late Bronze I, and it was destroyed by fire around 1400 BC (cf. Josh 8:28).



▲ Artist's reconstruction of the fortified outpost of Khirbet el-Maqtir. The site is only 2.5 acres in size, less than a third the size of contemporary Jericho.



◀ Late Bronze Age I gate at Khirbet el-Maqtir. Remains across most of the site were quite shallow due to the rocky soil; bedrock was exposed in many places prior to excavations. Six large gate sockets were found in this area, which confirmed that the structure was a city gate.

Points to Ponder

- As with Jericho, the conquest of any part of the Promised Land was directly tied to _____ to God.
- Sin inhibits our ability to do what is right, and if unchecked it is _____.
- Achan's sin directly _____ many others besides himself or even his family.
- Joshua's misdirected _____ for an easier time and place is probably too common.