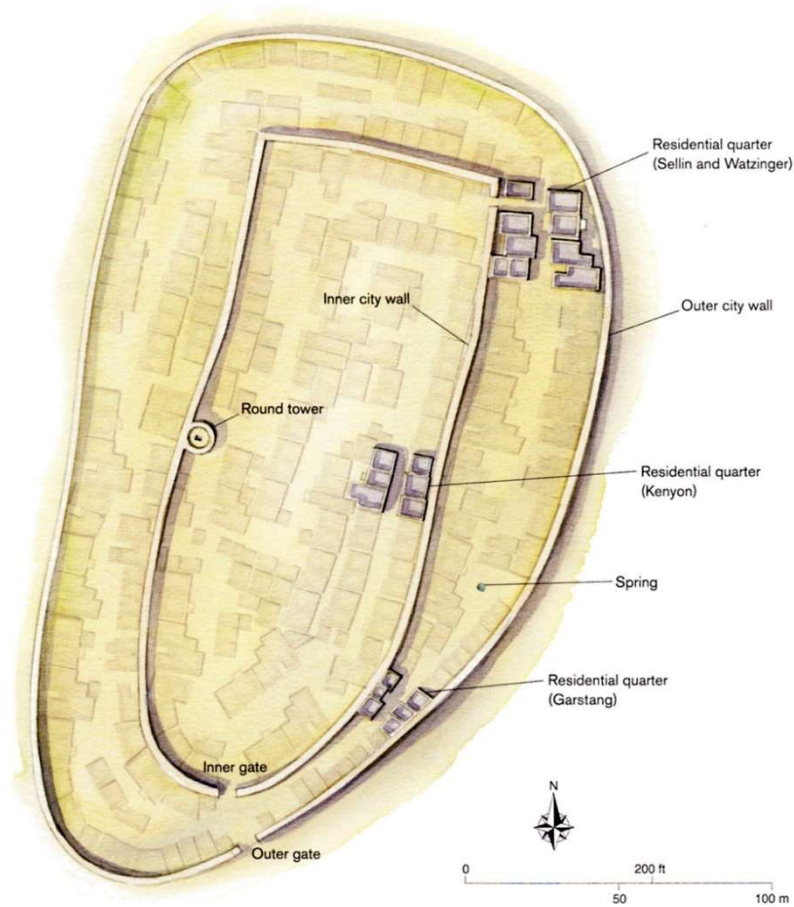
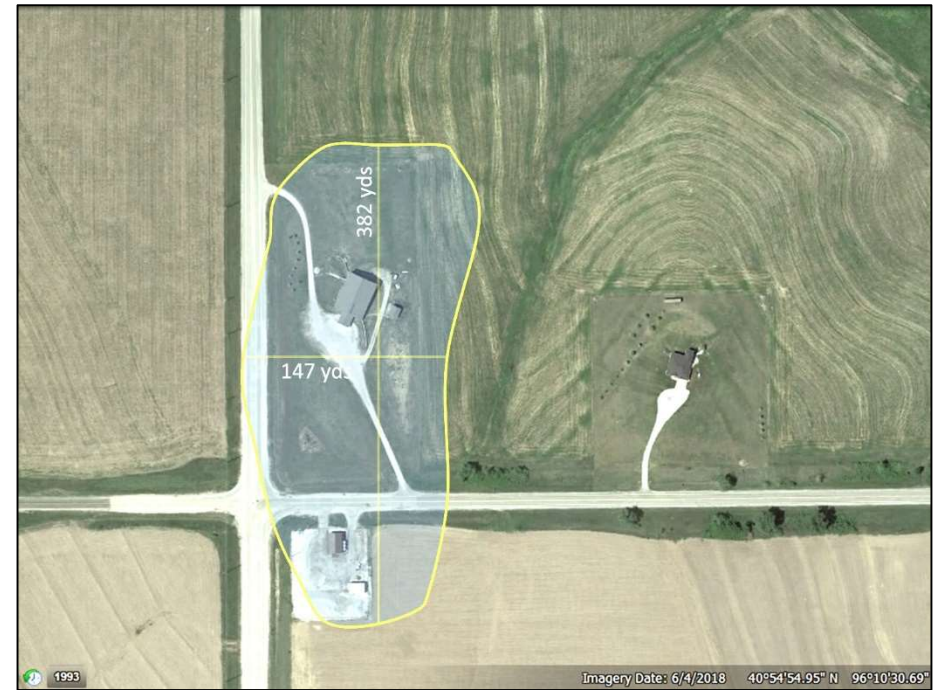
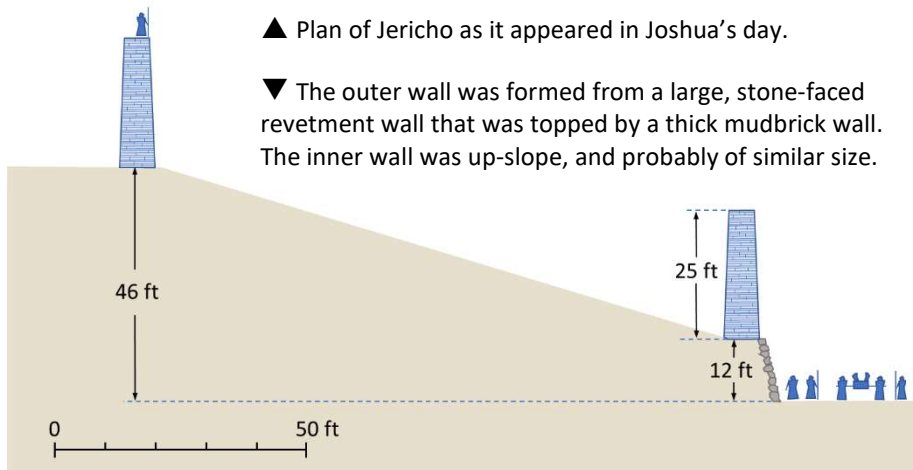


Joshua 6:1-14
Conquest of Jericho – Part 1



▲ Plan of Jericho as it appeared in Joshua’s day.

▼ The outer wall was formed from a large, stone-faced revetment wall that was topped by a thick mudbrick wall. The inner wall was up-slope, and probably of similar size.



▲ Scale plan of Jericho overlaid on a satellite image of Crossroads Bible Church.

The outer wall of Jericho encircled an area of about ____ acres.

An estimated _____ people lived in the city, although with the addition of people from surrounding villages it could have been twice that number when the walls fell.

If the Israelites kept about ____ yds away from the ancient city walls, their circuit around the city would have been about _____ in length.

Points to Ponder

- God laid out the whole plan for Israel _____. He did not keep it a mystery.
- Conquest of the city still required _____ on the part of the Israelites.
- Like the Israelites, we must _____ in what God has asked us to do, even if it is simple or mundane.